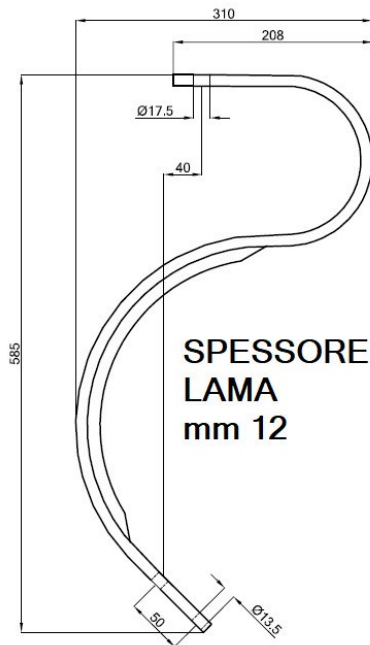
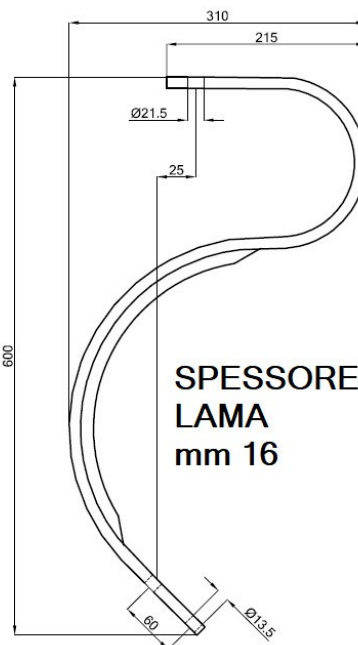


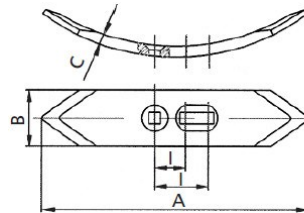
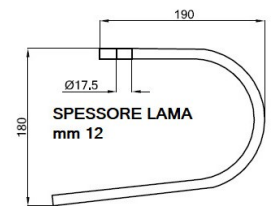
# MOLLE PER COLTIVATORI



**SPESSORE LAMA mm 12**

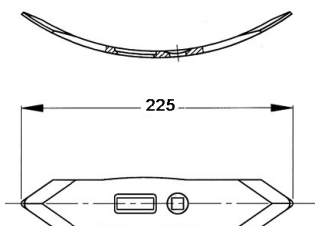
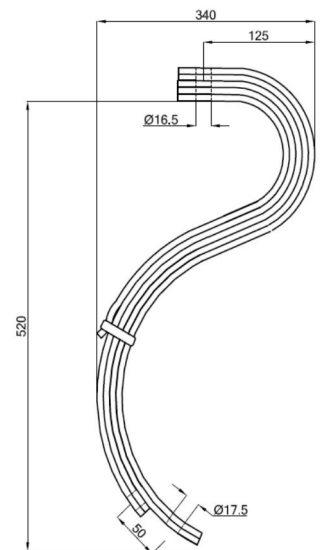
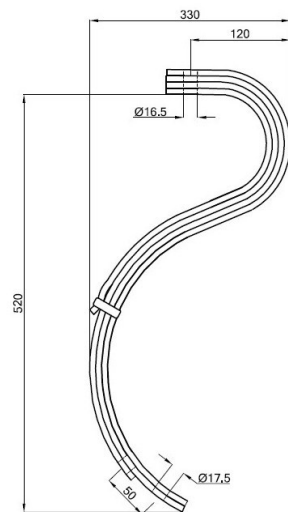


**SPESSORE LAMA mm 16**



A = 285  
B = 60  
C = 12

Cod.	Descrizione
05690	MOLLA COLTIVATORE 50x12
05700	MOLLA COLTIVATORE 50x16
05705	RINFORZO MOLLA COLTIVATORE 50x12 - 50x16
05706	ATTACCO COMPLETO COLTIVATORE 50x12 - 50x16
05707	VOMERINO MOLLE COLTIVATORE mm 60x12x285



Piatto: 45x7  
Fori: 11,5  
Interasse: 45-50  
Peso: 480gg

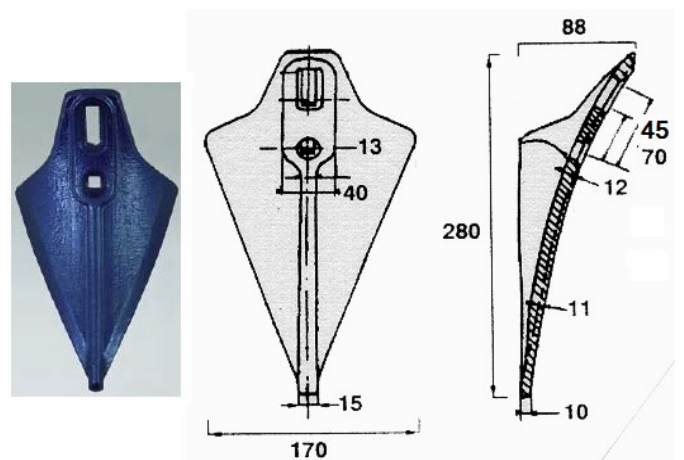
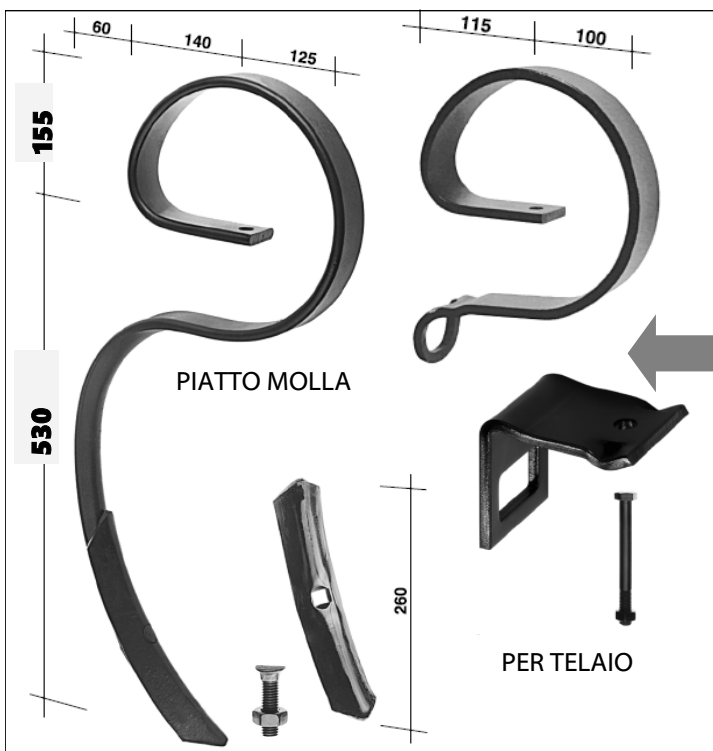
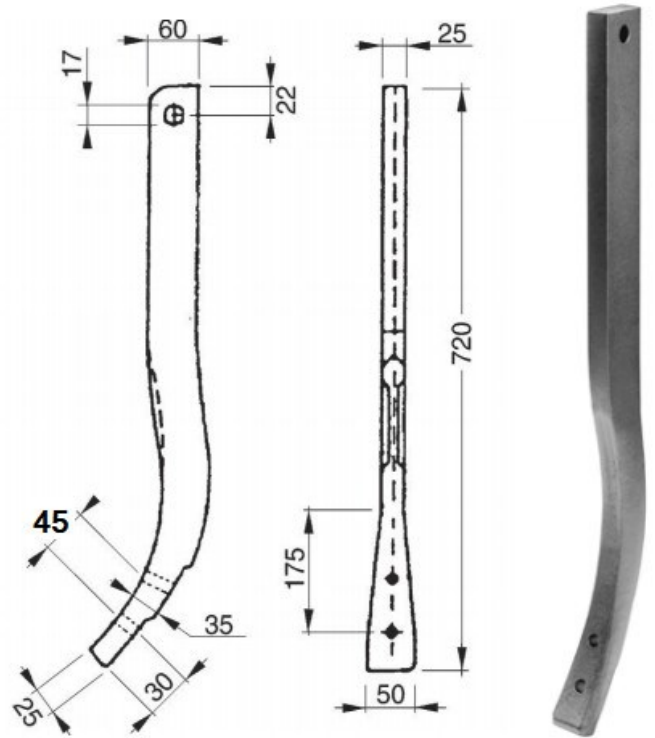
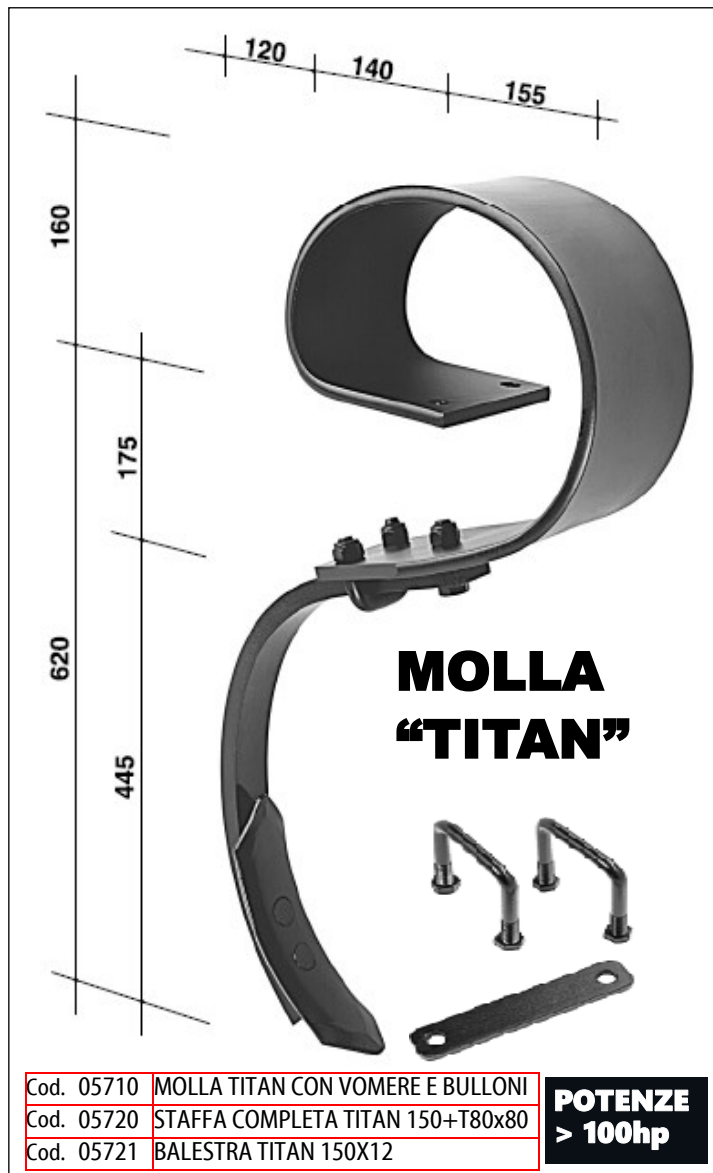


Cod. 05650	BULLONE TPS-Q 10x35 - 10x45
Cod. 05660	MOLLA CULTOR FOGLI 3½
Cod. 05670	MOLLA CULTOR FOGLI 4½
Cod. 05680	VOMERINO CULTOR REVERSIBILE 45x7

Cod. 05620	ATTACCO CULTOR COMPLETO TEL. 65x42
Cod. 05630	ATTACCO CULTOR COMPLETO TEL. 80x60
Cod. 05640	CAVALLOTTO M 14 TEL. 65 - TEL. 80

# ELEMENTI PER ESTIRPATORI - COLTIVATORI

## ANCORA TIPO TEDESCO VOMERINO TIPO BELGIO

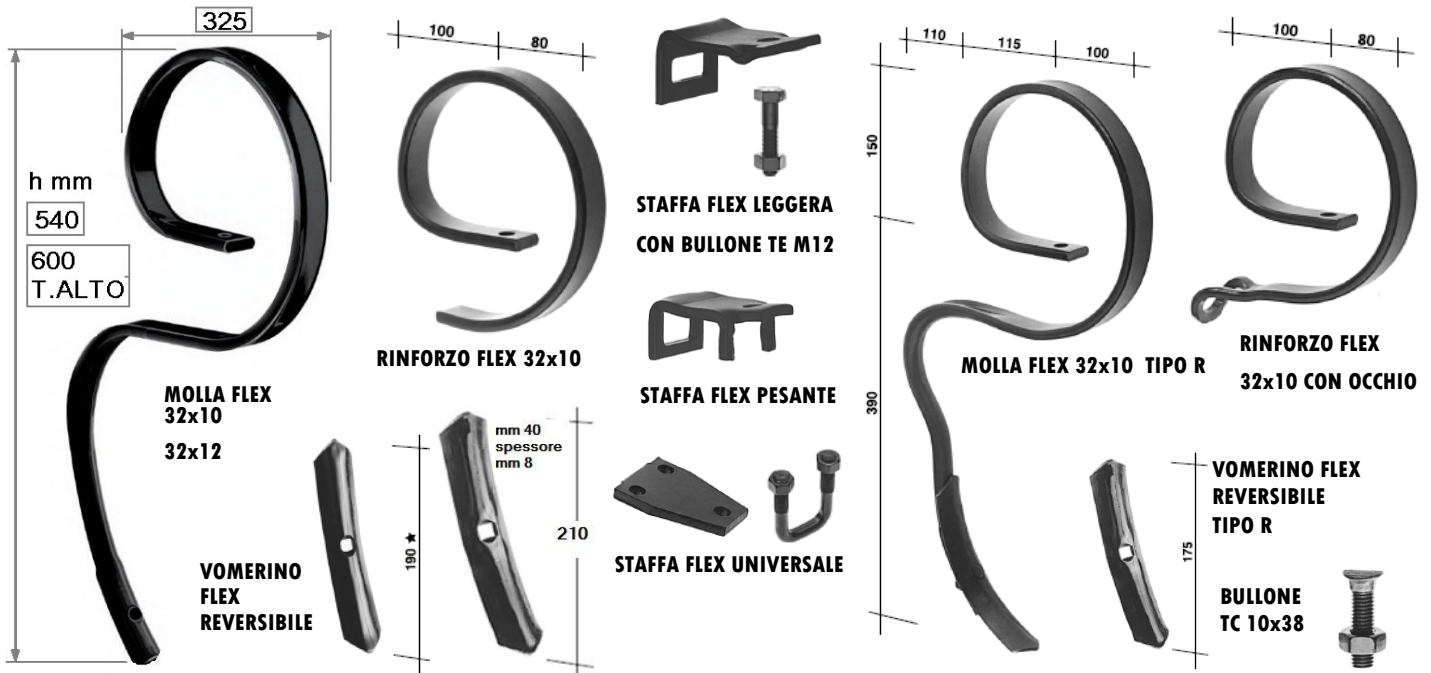


Cod. 07315	ANCORA TIPO TEDESCO 60x25x720 INT. 45
Cod. 07317	VOMERINO TIPO BELGIO 170x280 FORO ASOLA

## MOLLE PER COLTIVATORE MEDIO "SUPER-FLEX"

Cod. 05120	MOLLA SUPERFLEX 45x12
Cod. 05130	RINFORZO SUPERFLEX CON OCCHIO 45x10
Cod. 05140	STAFFA SUPERFLEX 12+10 TEL. 60x60 COMPLETA
Cod. 05150	BULLONE VOMERE SUPERFLEX TC 10X45
Cod. 05160	VOMERINO SUPERFLEX 60x6

# MOLLE PER VIBRO-COLTIVATORI "FLEX"



Cod. 04840	STAFFA FLEX LEGGERA (MONOLAMA) $\pm$ 12+TELAIO 50x15
Cod. 04845	STAFFA FLEX LEGGERA (BILAMA) $\pm$ 12+10+TELAIO 50x15
Cod. 04846	STAFFA FLEX LEGGERA $\pm$ 12 +TELAIO 40x40
Cod. 04847	STAFFA FLEX LEGGERA $\pm$ 12 +TELAIO 50x50
Cod. 04848	STAFFA FLEX LEGGERA $\pm$ 12+10+TELAIO 40x40
Cod. 04849	STAFFA FLEX LEGGERA $\pm$ 12+10+TELAIO 50x50
Cod. 04860	STAFFA FLEX PESANTE VARIE MISURE
Cod. 04870	STAFFA FLEX UNIVERSALE COMPLETA
Cod. 04880	CAVALLOTTO STAFFA UNIVERSALE
Cod. 05030	VOMERINO FLEX REVERSIBILE 40x5x190
Cod. 05035	VOMERINO FLEX PESANTE REV. 40x8x210

Cod. 04890	BULLONE STAFFA TE 12x50 ZINCATO
Cod. 04900	BULLONE STAFFA TE 12x60 ZINCATO
Cod. 04901	BULLONE STAFFA TE 12x90 ZINCATO
Cod. 04910	BULLONE VOMERE TC 10x38 CL. 8.8
Cod. 04920	MOLLA FLEX 32x10
Cod. 04930	MOLLA FLEX 32x12
Cod. 04950	MOLLA FLEX 32x10 TIPO R
Cod. 04960	RINFORZO FLEX 32x10
Cod. 04965	MOLLA FLEX ALTA 32x12
Cod. 04970	RINFORZO FLEX 32x10 AD OCCHIO

## ALTRI VOMERINI UTILIZZABILI



**BOMBATO 105**

**BOMBATO 150-175**

**BOMBATO 200-250**

**BOMBATO 150 TIPO G.**

**SCALPELLO**

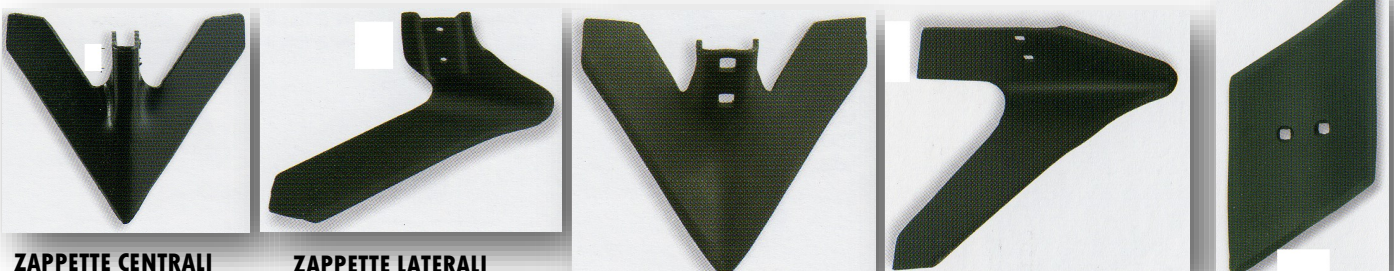
**ZAMPA D'OCA**

Cod. 04980	VOMERINO FLEX BOMBATO 105x4
Cod. 04990	VOMERINO FLEX BOMBATO 150x4
Cod. 04995	VOMERINO FLEX BOMBATO 150x4,5 G.

Cod. 05000	VOMERINO FLEX BOMBATO 175x4
Cod. 05010	VOMERINO FLEX BOMBATO 200x4
Cod. 05020	VOMERINO FLEX BOMBATO 250x4

Cod. 05040	VOMERINO FLEX REVERSIBILE TIPO R 40x5
Cod. 05050	VOMERINO FLEX "ZAMPA D'OCA" 70x4
Cod. 05055	VOMERINO FLEX A SCALPELLO

## ZAPPETTE PER SARCHIATORI FISSI



**ZAPPETTE CENTRALI  
NORMALI cm 12-14-  
16-18-20-22-24-26-  
28-30**

**ZAPPETTE LATERALI  
NORMALI cm 12-14-  
16-18-20**

**ZAPPETTE CENTRALI  
PESANTI cm 22-26-30**

**ZAPPETTE LATERALI  
PESANTI cm 22**

**ALETTA cm 32**

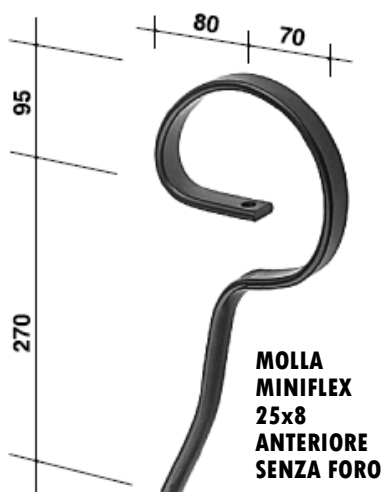
# MOLLE "FLEX" DIRITTE - MOLLE "MINIFLEX"



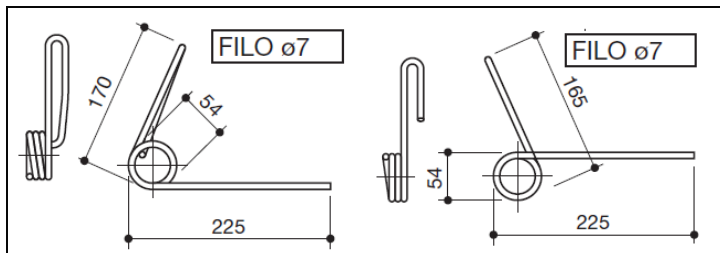
## MOLLA DIRITTA BASSA (TIPO "GE") 32x10



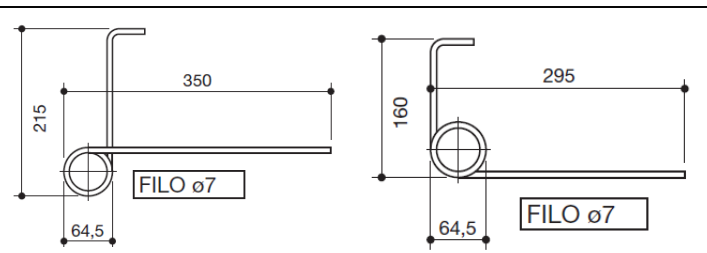
Cod. 05065	MOLLA DIRITTA 32x10 TIPO GE (h mm 400)
Cod. 05066	VOMERINO DIRITTO TIPO GE 40x5x135
Cod. 05075	MOLLA DIRITTA 32x10 TIPO CH (h mm 525)
Cod. 05076	VOMERINO DIRITTO TIPO CH 40x6x210
Cod. 05078	MOLLA DIRITTA 32x12 ALTA TIPO JP (h mm 590)
Cod. 05079	MOLLA DIRITTA 32x12 TIPO JA (h mm 525)
Cod. 05080	MOLLA MINIFLEX 25x8 POSTERIORE CON FORO PER VOMERE
Cod. 05090	MOLLA MINIFLEX 25x8 ANTERIORE SENZA FORO
Cod. 05100	MOLLA MINIFLEX 25x8 POSTERIORE SENZA FORO
Cod. 05105	MOLLA MINIFLEX 25x8 DIRITTA SENZA FORO
Cod. 05110	VOMERINO MINIFLEX REVERS. 40x5x135
Cod. 05111	ATTACCO MINIFLEX COMPLETO 25x8 +TELAIO 40x10



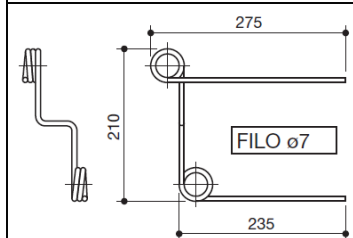
# DENTI COPRISEME PER ERPICETTI - DENTI STRIGLIATORE



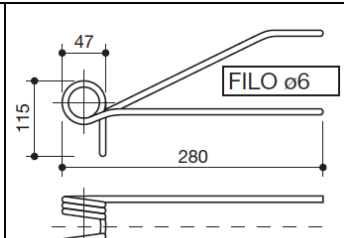
Cod. 06190 DENTE ERPICETTO-SEMINATRICE ANTERIORE-POSTERIORE CARRARO



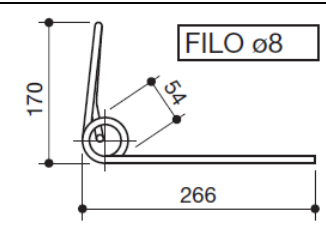
Cod. 06160 DENTE ERPICETTO AMAZONE LUNGO-CORTO



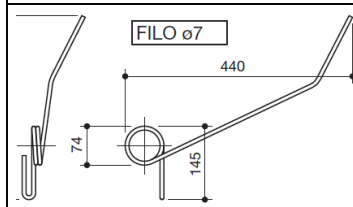
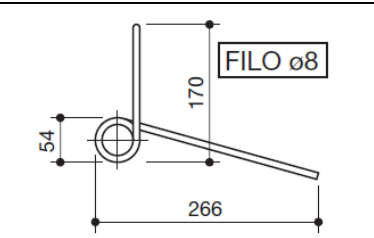
Cod. 06170 DENTE ERPICETTO GALLIGNANI DOPPIA



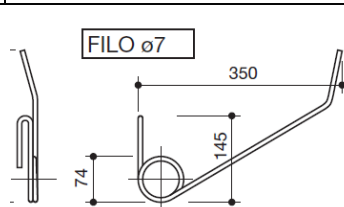
Cod. 06180 DENTE ERPICETTO MORENI



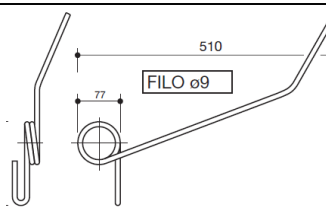
Cod. 06175 DENTE ERPICETTO MARZIA ANTERIORE-POSTERIORE



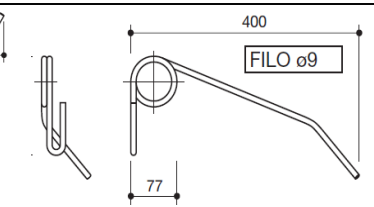
Cod. 06193 DENTE POSTERIORE LUNGO SEMINATRICE GASPARDO FILO mm 7



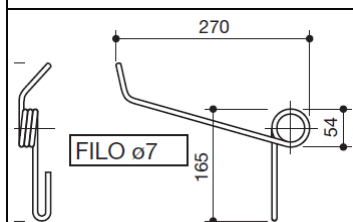
Cod. 06192 DENTE ANTERIORE CORTO SEMINATRICE GASPARDO FILO mm 7



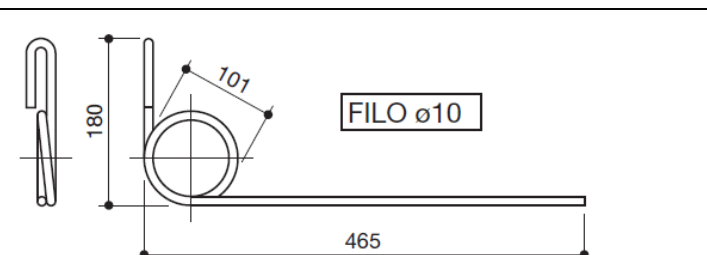
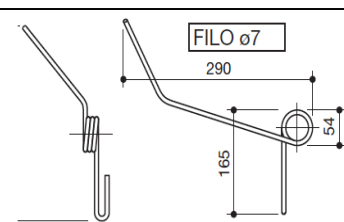
Cod. 06195 DENTE POSTERIORE LUNGO SEMINATRICE GASPARDO FILO mm 9



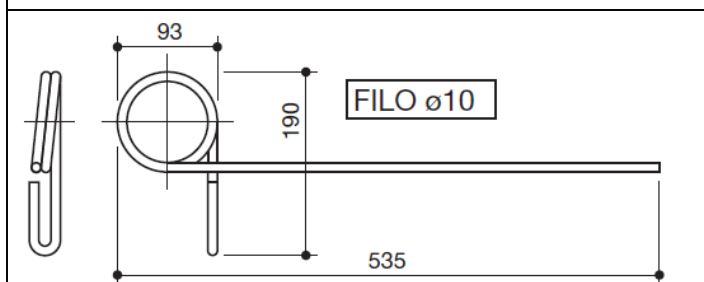
Cod. 06194 DENTE ANTERIORE CORTO SEMINATRICE GASPARDO FILO mm 9



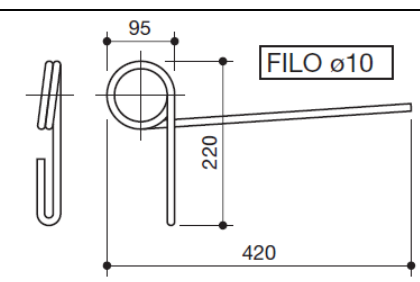
Cod. 06191 DENTE ERPICETTO-SEMINATRICE ANTERIORE-POSTERIORE MASCAR



Cod. 06130 DENTE STRIGLIATORE FILO mm 10 h mm 450 ATT. SOPRA



Cod. 06140 DENTE STRIGLIATORE FILO mm 10 h mm 450 ATT. SOTTO



Cod. 06145 DENTE STRIGLIATORE FILO mm 10 h mm 330 ATT. SOTTO



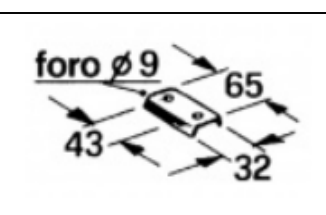
Cod. 06125 SOFFIETTO CILINDRICO PER TUBO CONDUCI-SEMI



Cod. 06147 STAFFA DENTE STRIGLIATORE FB COMPLETA



Cod. 06197 PIASTRINA ATTACCO DENTE STRIGLIATORE E SEM. GASPARDO



Cod. 06150 PIASTRINA FISSAGGIO MOLLA ERPICETTO-SEMINATRICE CARRARO



Cod. 06148 STAFFA DENTE STRIGLIATORE T. 50x50 (SOLO CAVALLOTTO)

# ELEMENTI PER ROMPITRACCIA

**Cod. 05110 VOMERINO 40x5x135**

**Cod. 05030 VOMERINO 40x5x190**

**Cod. 05207 VOMERINO STROZZATO 32x8**

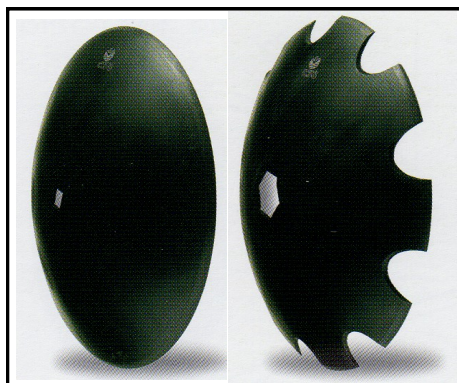
**TIPO ARRETRATO ALTA mm 700**

**SEZIONE QUADRA 25x25 30x30 35x35**

		SEZIONE	A	B	C
Cod. 05170	MOLLA CANCELLATRACCIA 32x10 BASSA	32X10	550	270	165
Cod. 05202	MOLLA CANCELLATRACCIA 32x10 ALTA	32X10	750	440	165
Cod. 05180	MOLLA CANCELLATRACCIA 40x10 ALTA	40X10	750	445	165

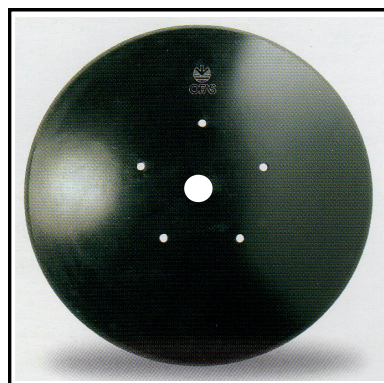
Cod. 05190	RINFORZO 32x10	Cod. 05205	MOLLA CANCELLATRACCIA 32x10 ARRETRATA	Cod. 05208	CANCELLATRACCIA 25x25x700 VOMERE E BULLONI
Cod. 05200	RINFORZO 40x10	Cod. 05206	RINFORZO CANCELLATRACCIA 32x10 ARRETRATO	Cod. 05209	CANCELLATRACCIA 30x30x700 VOMERE E BULLONI
Cod. 05203	RINFORZO 32x10 ALTO			Cod. 05210	CANCELLATRACCIA 35x35x700 VOMERE E BULLONI

# DISCHI PER FRANGIZOLLE, ARTRI, SEMINTRICI



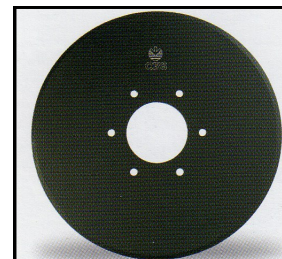
**DISCHI PER ERPICE BOMBATI LISCI E DENTATI**

Ø mm	± mm	Ø mm	± mm
410	3,2	560	4
460	3,2	610	5
510	3,5	660	6



**DISCHI PER ARATRO BOMBATI LISCI E DENTATI\***

Ø mm	± mm	Ø mm	± mm
310	4,5	510 *	6
360	4,5	560	6
410 *	6	610	6
460 *	6	660	6



**DISCHI PER ARATRO PIANI LISCI E DENTATI**

Ø mm	spessore mm
400	6
450	6
500	6



**DISCHI LISCI BOMBATI E PIANI PER SEMINATRICE**

Ø mm	spessore
250 *	2,5
280 *	2,5
305 *	2,5
325 *	2,5
350 *	3

**FORNITURA A RICHIESTA ANCHE DI MISURE DIVERSE**